



# GAT MONTHLY MEMBERSHIP PROGRESS REPORT

Results as of: 2/28/2023

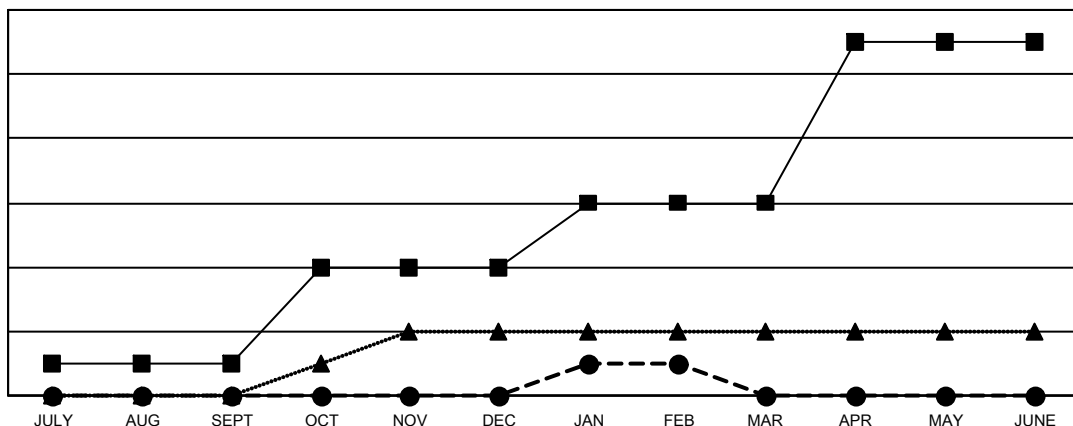
Multiple District 105

LOCATION: ENGLAND

Clubs			
RESULTS FOR 2022-2023			
QUARTER	NEW CLUB GOAL	NEW CLUBS	DROPPED CLUBS
JULY/AUG/SEPT	1	0	6
OCT/NOV/DEC	3	0	3
JAN/FEB/MAR	2	1	7
APR/MAY/JUNE	5	0	0

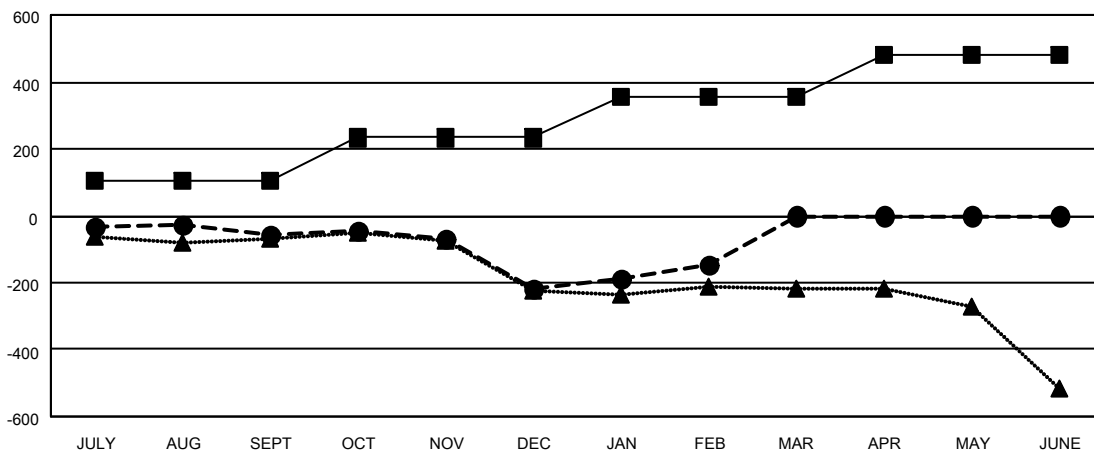
Members			
RESULTS FOR 2022-2023			
QUARTER	MEMBER GROWTH NET GOAL	MEMBER GROWTH ACTUAL	DROPPED MEMBERS ACTUAL (including transfers)
JULY/AUG/SEPT	104	244	269
OCT/NOV/DEC	129	256	381
JAN/FEB/MAR	122	263	163
APR/MAY/JUNE	127	0	0

GOALS AND ACTUAL NEW CLUBS CUMULATIVE



- - CURRENT YEAR GOALS FOR NEW CLUBS
- - CURRENT YEAR ACTUAL NEW CLUBS
- ▲ - LAST YEAR ACTUAL NEW CLUBS

GOALS AND ACTUAL MEMBERS CUMULATIVE



- - MEMBER GROWTH NET GOAL
- - MEMBER GROWTH ACTUAL
- ▲ - LAST YEAR MEMBERSHIP ACTUAL

DROPPED CLUBS: 16	
<b>DROPPED MEMBERS</b>	
DECEASED	129
CLUB CANCELLED	5
OTHER	679
<b>TOTAL</b>	<b>813</b>

267 CLUBS OF 575 ADDED 1 OR MORE NEW MEMBERS

[CLICK HERE FOR CUMULATIVE MEMBERSHIP DATA](#)

GENDER DISTRIBUTION	
MALE	6,876 (69.72%)
FEMALE	2,985 (30.26%)
NON BINARY	1 (0.01%)
PREFER NOT TO ANSWER	1 (0.01%)
<b>TOTAL FAMILY UNIT MEMBERS</b>	<b>1,349</b>
<b>FAMILY MEMBERS PAYING HALF DUES</b>	<b>686</b>